

TinyTERM Plus

IBM and UNIX Host Connectivity for the Enterprise

TinyTERM Plus addresses the host connectivity needs of enterprise-level organizations that require access to IBM mainframes, mid-range computer systems, and UNIX / Linux servers. Standardizing on TinyTERM Plus offers easy and economical migration from other vendor's products, with enterprise-grade deployment management tools and integration options providing ease and greater flexibility to control and customize organizational rollouts.

IBM Host Access

TinyTERM Plus provides IBM mainframe connectivity with precise TN3270E emulation, including LU1/LU3 printing support and secure host access utilizing strong SSL encryption.

IBM AS/400 iSeries support is integrated into TinyTERM Plus with complete TN5250E emulation, LPD printer support, and secure connectivity through SSH encryption.

UNIX / Linux Access

Organizations using UNIX and Linux systems can rely on the support in TinyTERM Plus for legacy terminals including DEC VT52 thru VT420, SCO ANSI, and Wyse 60. SSH1/SSH2 encryption is used to secure all host communications.

Increase User Productivity

Login and authentication sequences can be automated and executed with a single keystroke, saving time. Complex file transfer sequences can be created that allow users to move files from one host to another, or from multiple hosts to the desktop. Shortcut keys can be assigned to applications, allowing users to rapidly task-switch from one application to another.



Corporate Enterprise Deployment

Advanced deployment capabilities provide flexibility to control and manage the enterprise rollout process. Customized host access configurations can be easily and automatically pushed from corporate file servers to multiple desktops, and are compatible with Microsoft SMS and Altiris installation mechanisms. TinyTERM Plus can be installed directly on Citrix and Microsoft TSE thin client servers for deployment without any desktop installation required. Web server deployment allows automated installation and execution within the desktop browser environment.

Pre-defined user configurations and the ability to lock-down user options guarantee a standardized user experience, minimal IT support, and simplified end-user training.

Ease of Migration

Migrating from your existing vendor to TinyTERM Plus is greatly simplified with built-in keyboard and codepage mappings compatible with Attachmate, Hummingbird, and WRQ products. To further speed migration, TinyTERM Plus includes a number of script and configuration conversion utilities that greatly reduce the time and costs associated with migration.

Data Security

TinyTERM Plus includes SSL and SSH1/SSH2 for secure host connectivity. Based on strong 1024-bit encryption, these protocols allow users to securely access remote hosts over any network, and safely transfer files between systems.

To further safeguard sensitive enterprise data, TinyTERM Plus offers port forwarding, a technology that allows normally unsecure communications like email or web surfing to be encrypted site-to-site, thereby ensuring the privacy and integrity of user communications.

Print Management

Print management capabilities integrated into TinyTERM Plus allow users to route print jobs to any local or network printer and allow local desktop printers to act as additional network print resources. Print jobs can also be output as files and stored anywhere on the network. Enterprise users can select custom settings and configurations for each printer or print job.

Scripting and Automation

TinyTERM Plus offers comprehensive scripting and automation capabilities designed to simplify user operations and increase productivity. Login and authentication sequences can be created and executed with a single keystroke, and complex file transfer sequences can be created to move files securely from one host to another. Users can also create their own sequences with macro record, edit, and playback functionality.

Support for industry standards such as HLLAPI, COM, OLE, and ActiveX give TinyTERM Plus users a choice of mechanisms to integrate host data with local desktop applications and spreadsheets. TinyTERM Plus also includes CScript, one of the most comprehensive scripting languages available. Using CScript, the entire desktop user interface can be modified and deployed as a custom application.

File Transfer

File transfer support in TinyTERM Plus allows users to transfer files throughout the enterprise using a variety of protocols. Support for IBM mainframes and servers includes IND\$FILE host file transfer, and a graphical drag-and-drop FTP client allows secure file transfers utilizing SFTP, SCP, and SSH protocols.



Terminal Emulations

IBM TN3270E Models 2-5 (RFC 2355, 1646)
 IBM TN5250E (RFC 1205)
 DEC VT420, VT320, VT220, VT102, VT52
 SCO ANSI, ANSI 3.64
 WYSE 60, WYSE 50
 TVI 912, 925, 950
 IBM 3151
 PCTERM, ADM 1, TTY
 Stand-alone application or browser-based
 Multiple session support
 Transmit, receive and keyboard code pages
 Resizable emulation w/scalable fonts
 Programmable attributes, cursors and background images

Printing

IBM 3287 LU1/LU3 Host print
 IBM 5250 LPD Printing
 VT/WYSE Transparent print
 Print redirection to LPD, Windows spooler
 LPR/LPD Print spooler

File Transfer

IND\$FILE Host file transfer
 Graphical FTP Client
 SFTP, SCP and SSH secure file transfer
 Samba SMB file server implementation

Security

SSL, SSH1 and SSH2 connection layer security w/1024-bit keys
 Port forwarding

Keyboard/Mouse

Graphical keyboard remapping
 Mouse button remapping and macros

International

Host multi-byte character decoding
 Unicode UTF-8, Japanese, Chinese, Korean
 DBCS decoding
 English, French, German, Spanish, Italian, Portuguese, and Polish user interfaces

Macro/Script Language/APIs

Keyboard macro record, edit and playback
 Automatic keyboard macro generation
 HLLAPI/COM/OLE/ActiveX emulator interfaces
 TSL TERM Script Language compatible
 CScript Compiled Script Language
 Programmable user interface builder
 Configurable tool bars

Corporate Deployment

Single User Desktop Installation
 Web-page and Email-linked Installation
 Automated central file server installation compatible with Altiris and MSI/SMS
 Thin Client Server Installation
 Web Server Installation

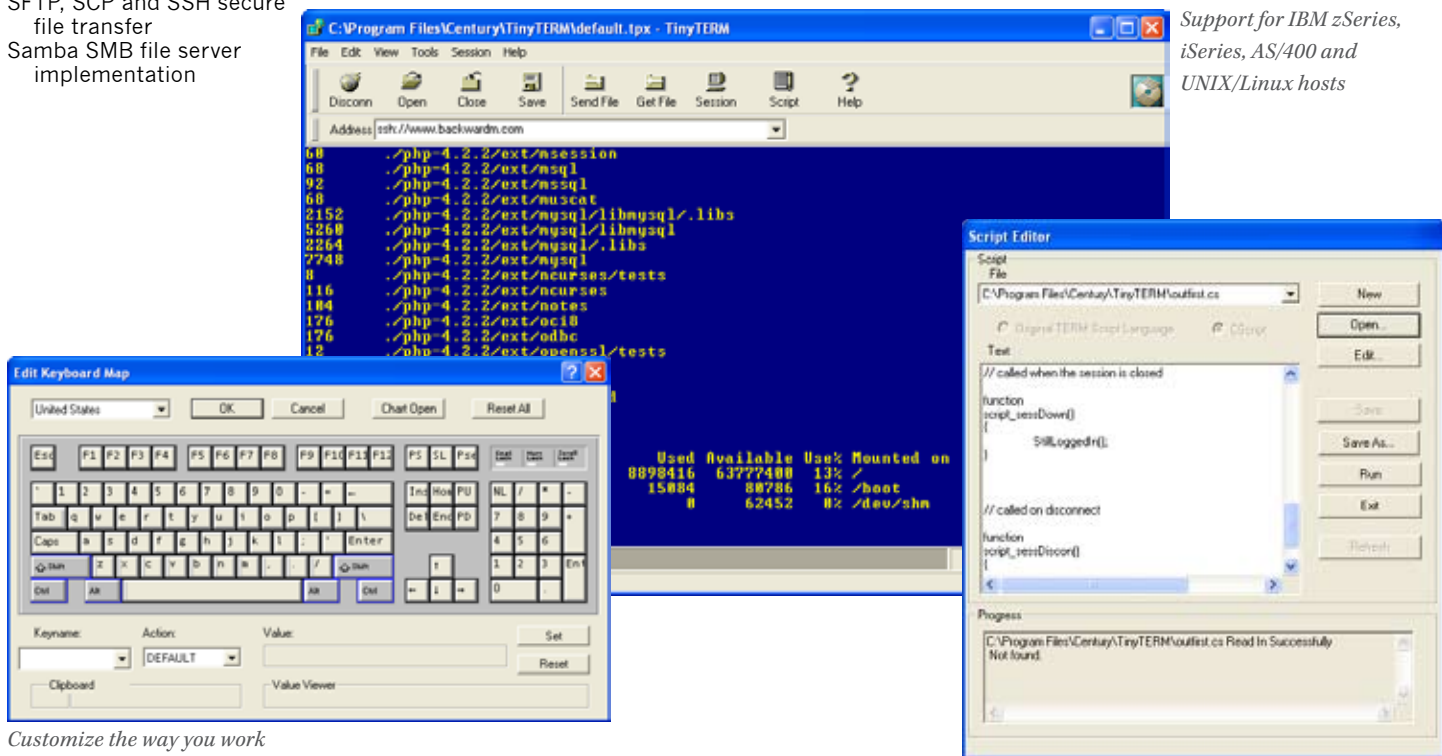
Migration Features

Keyboard, codepage, and attribute compatibility with Attachmate, WRQ, and Hummingbird products
 Configuration file conversion utilities
 Script language conversion utilities

System Requirements

Windows 98SE/Me/NT/2000/XP
 Windows TSE 2000/2003
 Citrix MetaFrame/MegaFrame
 32MB Memory 16MB Disk

Support for IBM zSeries, iSeries, AS/400 and UNIX/Linux hosts



Customize the way you work

Powerful automation features save time and money



5284 South Commerce Dr. Suite C-134
 Salt Lake City, Utah 84107

Toll Free (800) 877-3088
 Phone (801) 268-3088
 Fax (801) 268-2772
 E-mail sales@centurysoftware.com
 Web www.centurysoftware.com

SECURE CONNECTIVITY SOLUTIONS

Copyright © 1985-2005 Century Software, Inc. All Rights Reserved.
 Century Software, TinyTERM Plus and the "hub" logo are trademarks or registered trademarks of Century Software, Inc. All other trademarks, trade names, or company names referenced herein are used for identification purposes only and are the property of their respective owners.