

TERM for UNIX / Linux

Communications software for UNIX and Linux systems

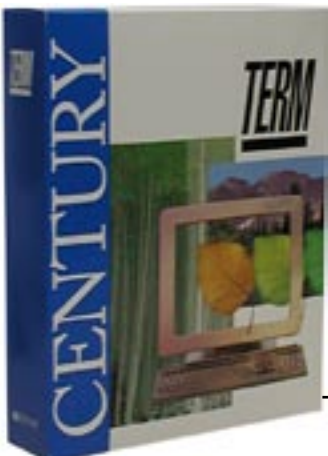
TERM for UNIX / Linux is a complete software solution for communication from UNIX and Linux hosts. It allows terminal or workstation users to access remote hosts from nearly any UNIX or Linux system over virtually any connection: asynchronous, modem, LAN, intranet, or the Internet. TERM also includes scripting tools you can use to automate redundant tasks and ensure fast, error-free file transfers.

Access Remote UNIX Systems Directly

TERM enables you to consolidate your different UNIX and Linux machines into a single system through advanced terminal emulation. TERM eliminates the access barriers caused by proprietary terminals and different hardware platforms, giving your entire enterprise access to important legacy information and applications.

Rely on Superior Terminal Emulation and Complete Flexibility

TERM accurately recreates all the popular terminal emulations, including SCO ANSI; Wyse® 60, 50 Line and Block; VT220-7, 220-8, 102, 100, 52; TV950, 925, 912; VT100; PCTERM; ANSI; IBM 3101 Line and Block; ADM-1; WANG 2110; and TTY. TERM provides accurate emulation and total flexibility. You can change the settings of your control keys, assign macro functions to keyboard characters, redefine the “break” key, and program a single key to log in and out of the system. You can also choose between 80- and 132-column mode and full-screen display. TERM provides transparent printing and screen printing functionality.



Use All the Popular File Transfer Protocols

TERM supports all the popular file transfer protocols, allowing both error-checked and non-error-checked transfers to other systems. The supported protocols include WTERMCRC, TERMCRC, KERMIT, MODEM7, and X-, Y-, and Zmodem.

With TERM you can perform unattended file transfers as well as upload and download files to a remote host. TERM includes a complete file transfer server, which has been created with the included scripting tool, TERM Script.

Automate Functions with the Included Scripting Language, TERM Script

TERM includes a powerful scripting language you can use for unlimited customizing possibilities. You can customize and automate host connectivity procedures, automate file transfers, create polling, log-in, log-out, and shutdown routines, and more. TERM Script includes a “learn mode” that enables you to write complete applications. Several pre-written applications are also included that you can customize: a simple BBS, interactive file transfer server, unattended file transfer, remote polling, and more.

Work with any Modem or Modem Bank

TERM is compatible with virtually all your existing modems and modem banks, making connections easy and worry free.

Use on Most UNIX Platforms, Including SCO, Linux, HP, AIX, Sun, and DEC

TERM gives you the flexibility to interact with all the popular UNIX and Linux hardware platforms. Now you can access all your legacy applications that are scattered over several different hosts through a single terminal interface.

Support Full telnet and rlogin Protocols over LANs, WANs, and the Internet

TERM supports full telnet and rlogin protocols to give you maximum compatibility and flexibility. With TERM, you can communicate over a serial line, modem, LAN, or the Internet.

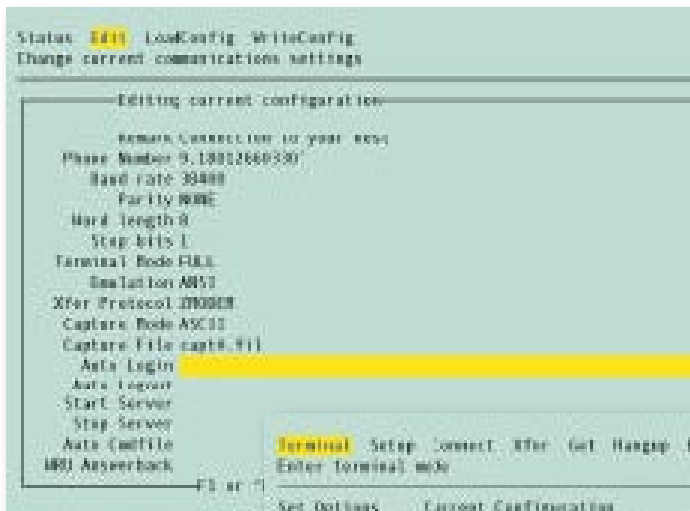
Coexist with Native UNIX Networking Commands such as UUCP

With TERM, you don't have to give up familiar UNIX commands or UUCP functionality. TERM allows you to work more efficiently without giving up the strengths of UNIX or making you learn new commands.

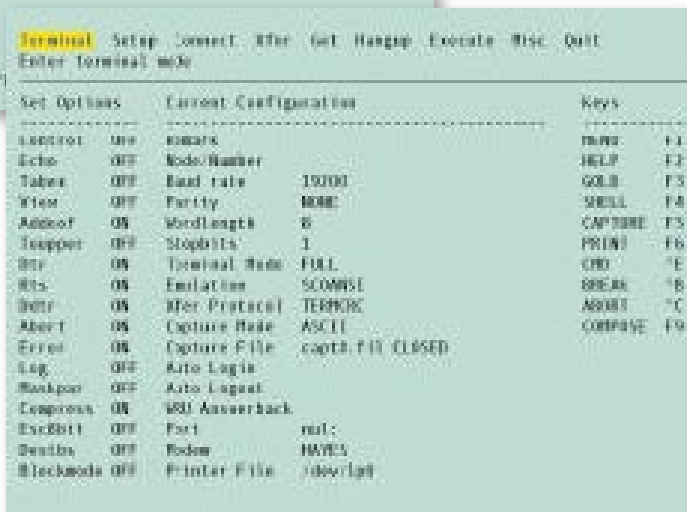
Save with No Per-User License Fees

With TERM, you can install and deploy host access functionality for clients from a central location, eliminating the hassle and cost of large-scale deployment. TERM is available to your whole enterprise without separate user license fees, combining accurate access with tremendous cost savings.





Menu driven session setup



Simple to use for logging into other hosts

Terminal Emulation Types

- VT220, VT102, VT52
- TV912, 925, 950
- ADM1
- IBM3101
- SCOANSI
- WYSE50, 60
- PCTERM
- WANG2110
- IBM3270
- TTY

Printing

- Transparent printing
- Screen Print

File Transfer Protocols

- TERMCRC
- WTERMCRC
- ZMODEM
- KERMIT
- MODEM7
- XMODEM
- YMODEM
- TERM5
- OLDTERM

Security

Support for external use of pre-installed SSH binaries on Linux and SCO

Keyboard/Mouse

Graphical keyboard remapping
Mouse button remapping and macros

Macro/Script Language/APIs

TSL TERM Script Language compatible

Connection Types

Support for all modems
Async
Telnet
PTY
External support for SSH on Linux and SCO

System Requirements

Available for the following systems:
SCO
RedHat
Suse
HP
AIX
Sun
DEC
16MB Memory 32MB Disk

BENEFITS

- Access remote UNIX systems directly
- Rely on superior terminal emulation and complete flexibility
- Use all the popular file transfer protocols
- Automate functions with the included scripting language, TERM Script
- Use on most UNIX platforms, including SCO, Linux, HP, AIX, Sun,
- and DEC
- Support full telnet and rlogin protocols over LANs, WANs, and the Internet
- Coexist with native UNIX networking commands such as UUCP
- Work with virtually any modem or modem bank
- Save with no per-user license fees



5284 South Commerce Dr. Suite C-134
Salt Lake City, Utah 84107

Toll Free (800) 877-3088
Phone (801) 268-3088
Fax (801) 268-2772
E-mail sales@centurysoftware.com
Web www.centurysoftware.com

SECURE CONNECTIVITY SOLUTIONS

Copyright © 1985-2005 Century Software, Inc. All Rights Reserved.
Century Software, TERM and the "hub" logo are trademarks or registered trademarks of Century Software, Inc. All other trademarks, trade names, or company names referenced herein are used for identification purposes only and are the property of their respective owners.

CS-TERM-DS-EN-041105